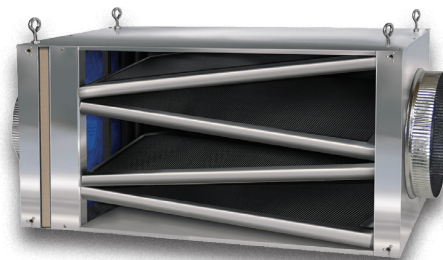


AIR BOX COMMERCIAL-GRADE AIR FILTERS



Experience unparalleled air filtration with Air Box Stealth high-flow carbon filters! Quiet yet powerful, this efficient unit eliminates excess heat and circulates fresh, healthy air. Its user-friendly design ensures quick installation, hassle-free maintenance, and seamless integration with any duct or air filtering system. Ideal for industrial, commercial, residential, indoor growing environments.



Key Features:

- **Quiet and Powerful:** Operates silently while delivering robust performance.
- **Replaceable High-Flow Carbon Filters:** Crafted from 100% premium virgin coconut charcoal.
- **Versatile Compatibility:** Available in 5 models ranging from 400 to 3500 CFM, with outlet sizes of 4", 6", 8", 10", 12"
- **Space-Saving Design:** Designed for overhead installation, saving valuable floor space.
- **Comprehensive Coverage:** 100% utilization of the filter surface area guarantees continuous, worry-free operation.
- **Made in the USA:** Built to the highest standards for use in industrial, commercial, residential, indoor growing environments.



AIR BOX STEALTH 400 CFM

4" FLANGE CARBON FILTER

Code: 4496



AIR BOX STEALTH 800 CFM

6" FLANGE CARBON FILTER

Code: 4765



AIR BOX STEALTH 1200 CFM

8" FLANGE CARBON FILTER PRE-FILTER INCLUDED

Code: 4753



AIR BOX STEALTH 2000 CFM

10" FLANGE CARBON FILTER PRE-FILTER INCLUDED

Code: 4716



AIR BOX STEALTH 3500 CFM

12" FLANGE CARBON FILTER PRE-FILTER INCLUDED

Code: 4754



Protect your space from unwanted pollutants with the versatile Air Box Junior. The Air Box HEPA unit eliminates 98% of all molds, mildew, spores, pollen, dust, dander, and other airborne particles down to 0.3 microns using a MERV 13 filter. The Air Box CARBON unit includes replaceable high-flow carbon filters made from 100% premium virgin coconut charcoal, enhancing filtration efficiency and air quality. Perfect for industrial, commercial, residential, indoor growing environments.

Key Features:

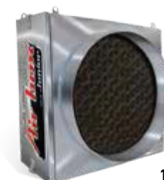
- **Versatile Installation:** Accepts standard 10" ducting and can be easily hung.
- **High-Efficiency Filtration:** Removes 98% of airborne contaminants, including tiny particles down to 0.3 microns.
- **User-Friendly Design:** Easy to install, and maintain, with replaceable and economical disposable filters.
- **Adaptable and Reliable:** Suitable for industrial, commercial, residential, indoor growing applications.



AIR BOX JUNIOR HEPA-MERV 13 FILTER 250 CFM

Code: 4543-H

10" FLANGE, PRE-FILTER INCLUDED



AIR BOX JUNIOR CARBON REFILL 250 CFM

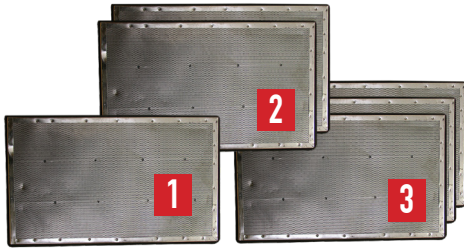
Code: 4543-C

10" FLANGE, PRE-FILTER INCLUDED

For more information or to order Air Box filters, visit www.airboxfilter.com or call 1.888.327.2251



AIRBOX FILTERS AND PRE-FILTERS



REFILL CARTRIDGE FOR
AIR BOX 1-2-3

Code: 4502



REFILL CARTRIDGE FOR
AIR BOX 4

Code: 4503



REFILL CARTRIDGE FOR
AIR BOX 4+

Code: 4504



AIR BOX ORIGINAL PRE-FILTER
3 4 4+
Code: 4530 Code: 4531 Code: 4532



AIR BOX JUNIOR
**COCO REFILL
(EXHAUST)**
Code: 4501-C



AIR BOX JUNIOR
**HEPA REFILL
(INTAKE)**
Code: 4501-H



AIR BOX JUNIOR
PRE-FILTER
Code: 4501-P

AIRBOX FILTERS AND PRE-FILTERS

Code	Description	Recommended Airflow	Recommended Minimum Airflow	Recommended CFM	Max. CFM	Residence Time @ Recommended CFM	Pressure (W.G.) @ Recommended CFM	Inlet/Outlet size	Pre-Filter	Number Of Cartridges		Unit Size Length Height Width	Maximum Operating Temp	Unit Weight
4496	Air Box 1 Stealth Edition	166 @ 0.05 sec contact time	75 CFM	200	400	0.04	0.6 W.G.	4"	No	1	—	20.25" x 8" x 12.25"	176 F	18 lbs
4765	Air Box 2 Stealth Edition	334 @ 0.05 sec contact time	400 CFM	400	800	0.04	0.6 W.G.	6"	No	2	—	22.25" x 10" x 12.25"	176 F	24 lbs
4753	Air Box 3 Stealth Edition	600 @ 0.05 sec contact time	—	600	1200	0.04	0.6 W.G.	8"	Yes	3	—	30.25" x 12.25" x 12.25"	176 F	45 lbs
4716	Air Box 4 Stealth Edition	800 @ 0.05 sec contact time	750 CFM	1000	2000	0.04	0.6 W.G.	10"	Yes	4	—	32.25" x 12.25" x 15.25"	176 F	59 lbs
4754	Air Box 4+ Stealth Edition	1500 @ 0.05 sec contact time	1000 CFM	1800	3500	0.04	1.2 W.G.	12"	Yes	4+	—	32.50" x 19.25" x 16.25"	176 F	120 lbs
4543-H	Air Box Junior Intake (Hepa)	—	—	125	250	0.04	1.0 W.G.	10"	Yes	1	—	5.5" x 12" x 12"	—	14.5 lbs
4543-C	Air Box Junior Exhaust (Carbon)	—	—	125	250	0.04	1.0 W.G.	10"	Yes	1	—	5.5" x 12" x 12"	—	14.5 lbs
Code	Description										Cartridges Size	Case Size	Unit Weight	Case Weight
4502	Refill Cartridge For Air Box Original 1	—	—	—	—	—	—	—	—	1	12" x 1" x 20"	13" x 11" x 21"	4 lbs	59.8 lbs
4502	Refill Cartridge For Air Box Original 2	—	—	—	—	—	—	—	—	2	12" x 1" x 20"	13" x 11" x 21"	8 lbs	59.8 lbs
4502	Refill Cartridge For Air Box Original 3	—	—	—	—	—	—	—	—	3	12" x 1" x 20"	13" x 11" x 21"	12 lbs	59.8 lbs
4503	Refill Cartridge For Air Box Original 4	—	—	—	—	—	—	—	—	4	12" x 1" x 24"	13" x 5" x 25"	20 lbs	30.7 lbs
4504	Refill Cartridge For Air Box Original 4+	—	—	—	—	—	—	—	—	4+	16" x 1.375" x 24"	17" x 6.5" x 25"	38 lbs	49.4 lbs
4501-C	Refill Cartridge For Air Box Junior CARBON	—	—	—	—	—	—	—	—	1	3" x 12" x 12"	—	6 lbs	—
4501-H	Refill Cartridge For Air Box Junior HEPA	—	—	—	—	—	—	—	—	1	3" x 12" x 12"	—	6 lbs	—
Code	Description										Filters Size		Unit Weight	
4530	Pre-Filter For Air Box Original 3	—	—	—	—	—	—	—	—	—	12" x 1" x 12"	—	0.15 lbs	—
4531	Pre-Filter For Air Box Original 4	—	—	—	—	—	—	—	—	—	12" x 1" x 15"	—	0.17 lbs	—
4532	Pre-Filter For Air Box Original 4+	—	—	—	—	—	—	—	—	—	16" x 1" x 19"	—	0.24 lbs	—
4501-P	Pre-Filter For Air Box Junior	—	—	—	—	—	—	—	—	—	12" x 1" x 12"	—	0.27 lbs	—

For more information or to order Air Box filters, visit
www.airboxfilter.com or call 1.888.327.2251

